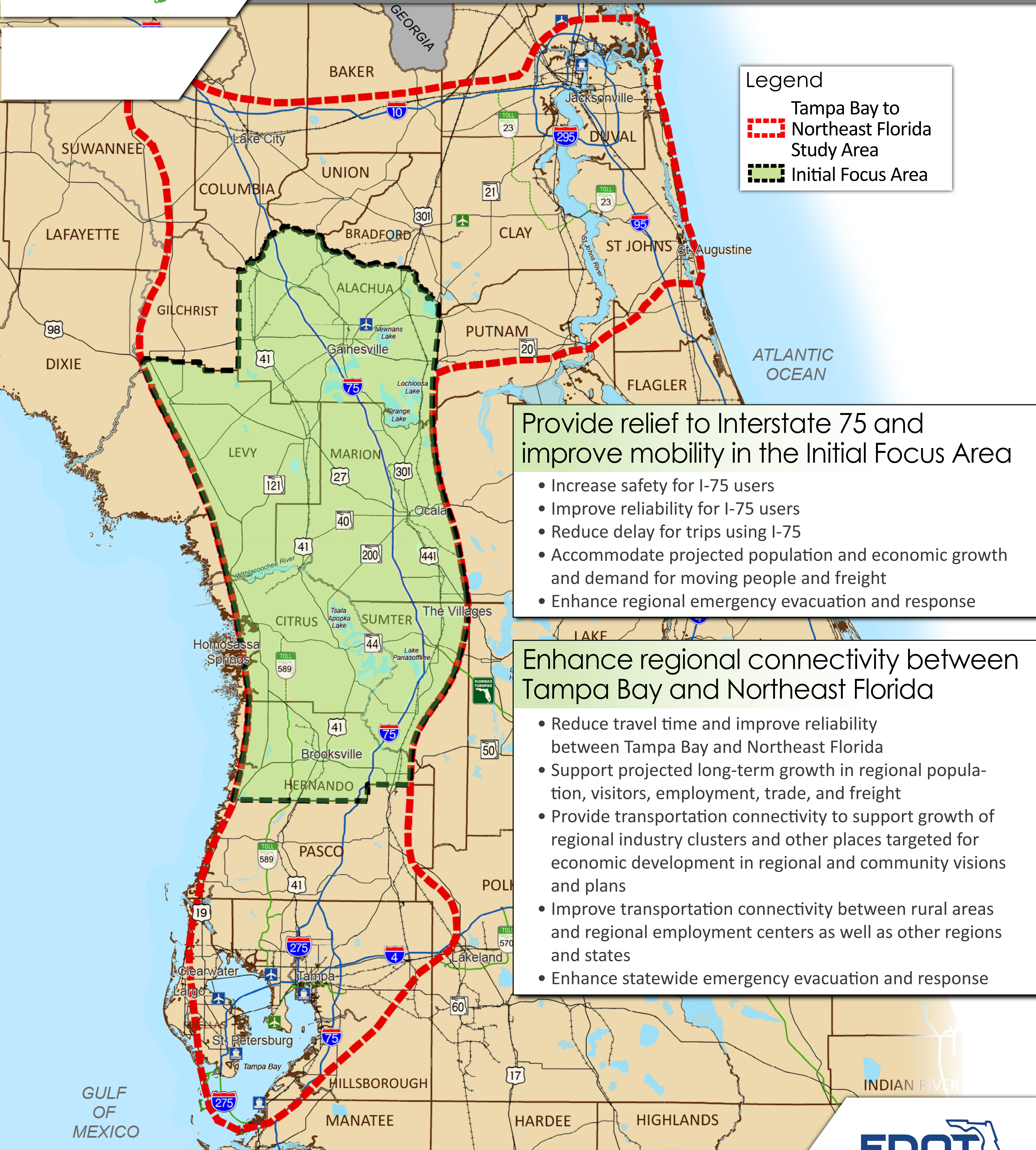




Preliminary Purpose & Need



Legend

- Tampa Bay to Northeast Florida Study Area
- Initial Focus Area

Provide relief to Interstate 75 and improve mobility in the Initial Focus Area

- Increase safety for I-75 users
- Improve reliability for I-75 users
- Reduce delay for trips using I-75
- Accommodate projected population and economic growth and demand for moving people and freight
- Enhance regional emergency evacuation and response

Enhance regional connectivity between Tampa Bay and Northeast Florida

- Reduce travel time and improve reliability between Tampa Bay and Northeast Florida
- Support projected long-term growth in regional population, visitors, employment, trade, and freight
- Provide transportation connectivity to support growth of regional industry clusters and other places targeted for economic development in regional and community visions and plans
- Improve transportation connectivity between rural areas and regional employment centers as well as other regions and states
- Enhance statewide emergency evacuation and response

